



HISTOFLOW

PROSPECTIVE INSTRUMENTS

ENABLING LABEL-FREE PATHOLOGY



PROSPECTIVE
LIFE SCIENCE



**TURN-KEY
EASY-TO-USE
COMPACT
MULTIMODAL**

Multiphoton Microscopes



PROSPECTIVE
LASERS

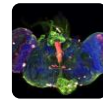


**TWO-PHOTON, SHG & THG
OPTOGENETICS
FLIM
CARS & SRS**

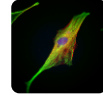
Femtosecond Lasers



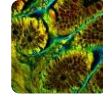
PROSPECTIVE
IMAGING SERVICES



MULTIPHOTON MICROSCOPY



WIDEFIELD FLUORESCENCE



FLIM



WHOLE SLIDE IMAGING (WSI)



LIGHTSHEET mesoSPIM

**SAMPLE PREPARATION
IMAGING
DATA MANAGEMENT**

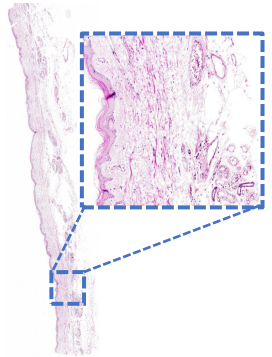
Contract Imaging Service



PROSPECTIVE
MEDICAL RESEARCH



**AI MACHINE
LEARNING**



**AI-POWERED LABEL-FREE
HISTOPATHOLOGY**

Label-free Pathology



Multimodal multiphoton imaging for medical applications

HISTOFLOW – a Label-free Instant Digital Pathology Platform



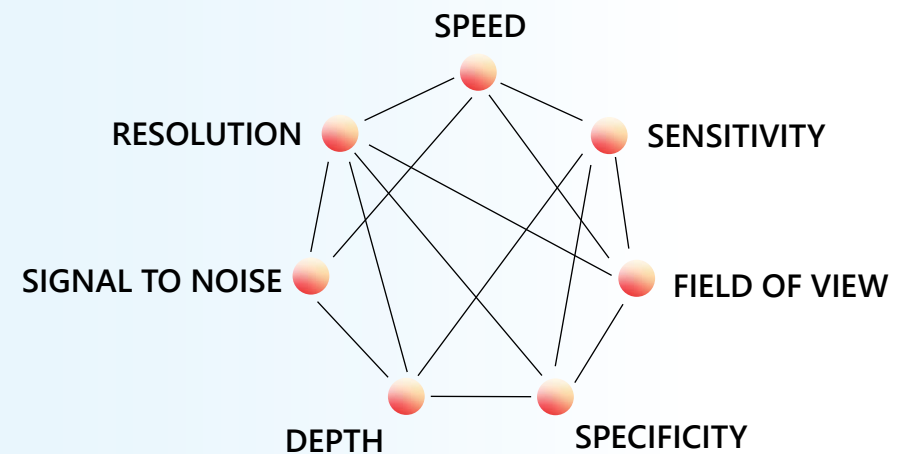
HISTOFLOW - INSTANT PATHOLOGY



- Turn-key
- Mobile
- Compact
- Ex-vivo
- In-vivo endoscopic capabilities
- Multimodal imaging

HISTOFLOW

„The aim is to develop a turn-key, easy-to-use and high performance imaging platform for unstained tissue“



HISTOFLOW - INSTANT PATHOLOGY

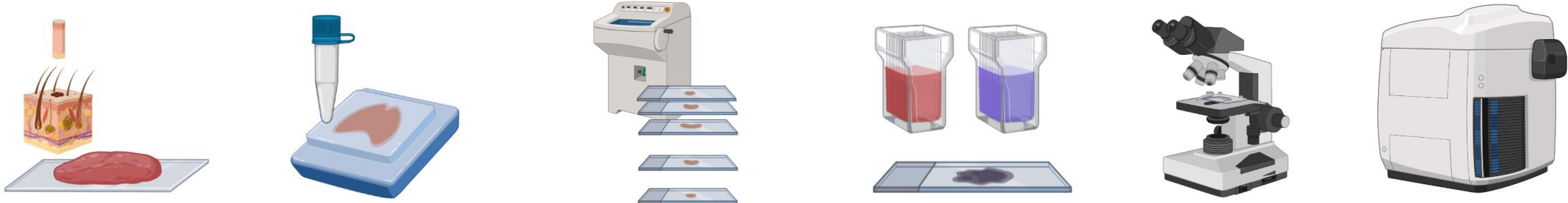


- AI-powered virtual H&E staining
- Fully equipped multimodal microscope for 2D and 3D imaging
- Label-free imaging of biomarkers

HISTOFLOW

„Ai-powered, label-free pathology, for a broad range of 2D and 3D samples“

STATE OF THE ART: HISTOPATHOLOGY



FFPE: 1-2 days

Biopsy

Fixation & Embedding

Tissue Sections

Staining

Diagnostics

Digitalization

CRYO: ~ 1h

Biopsy

Embedding

Tissue Sections

Staining

Diagnostics



HISTOFLOW *Endoscope ready*

Native 3D Samples

Optical slicing & Digitalization

Virtual AI-staining

Orthogonal Data

*Created with BioRender.com

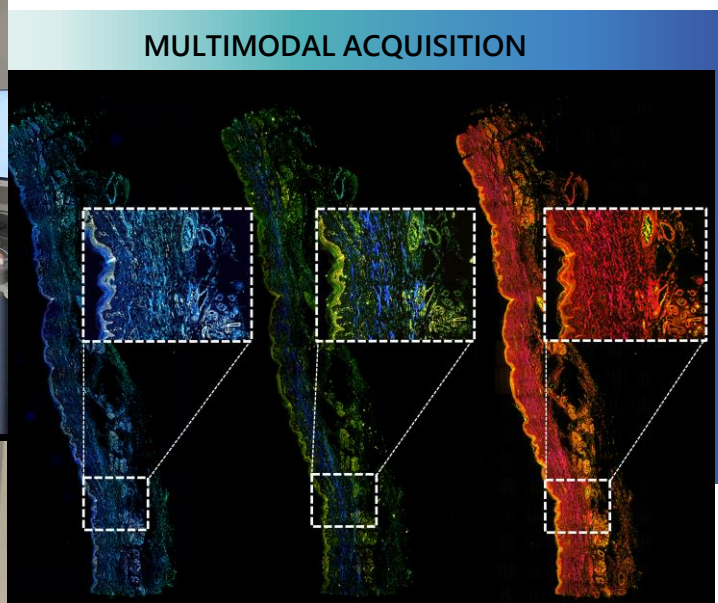
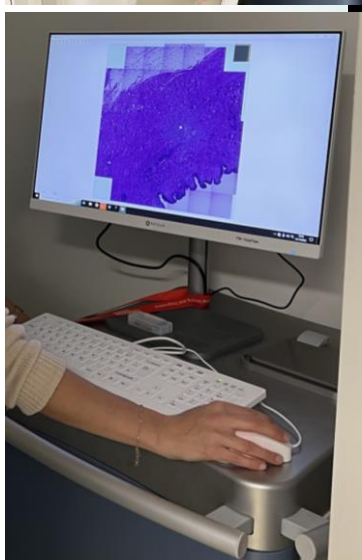
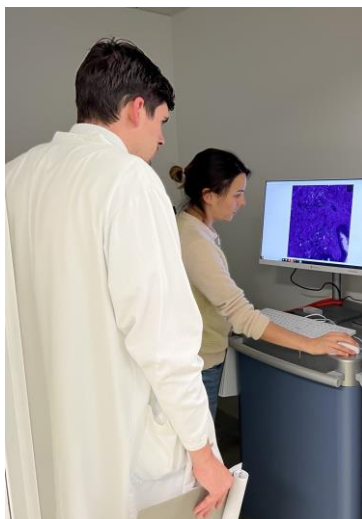


HISTOFLOW – AI-powered Histopathology

Virtual H&E Staining



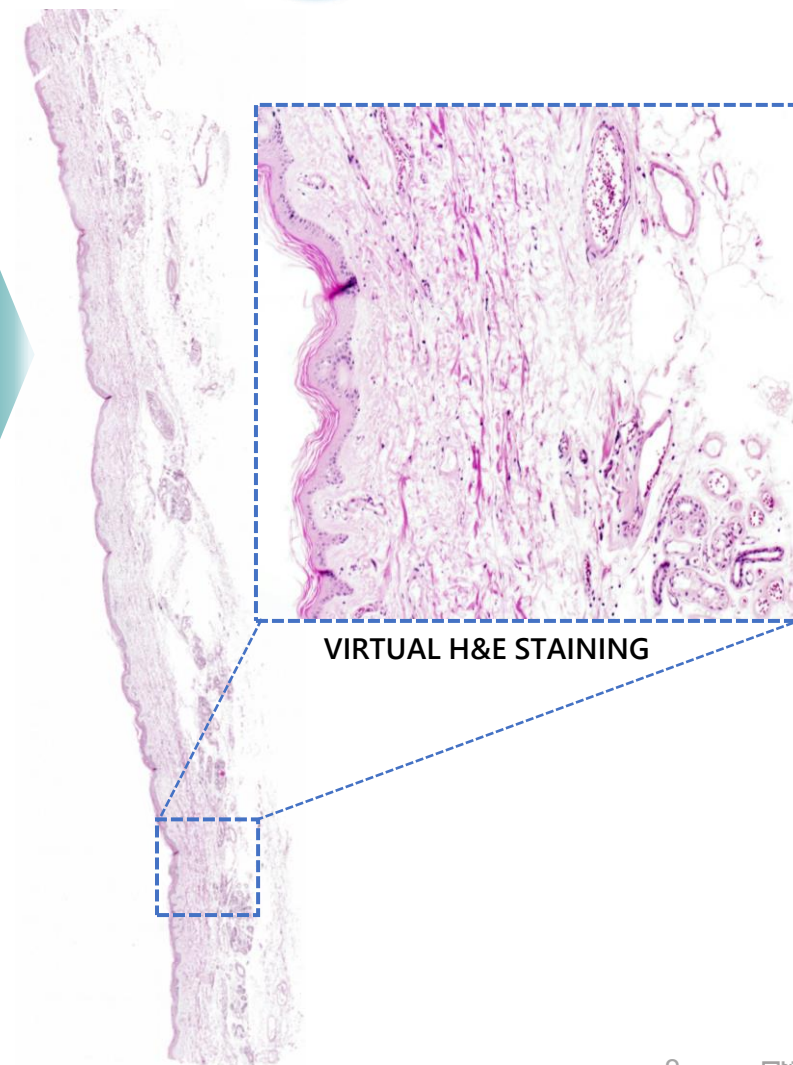
AI-POWERED VIRTUAL H&E STAINING



AI MACHINE
LEARNING

HISTOFLOW:

„AI powered virtual
H&E staining“



HISTOFLOW – Multimodal for Orthogonal Data

Fully Analyze a Tissue's Landscape

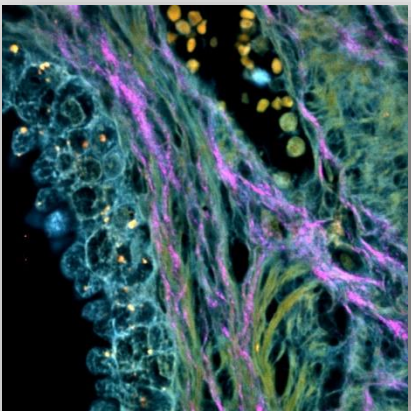
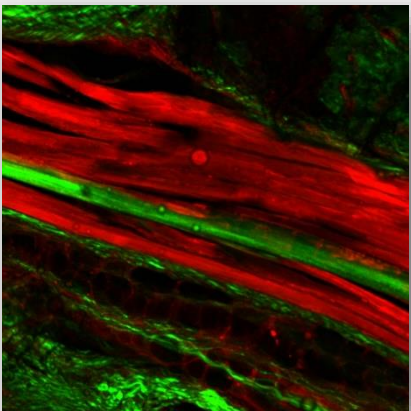
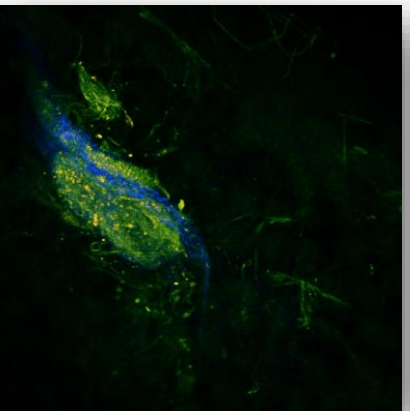
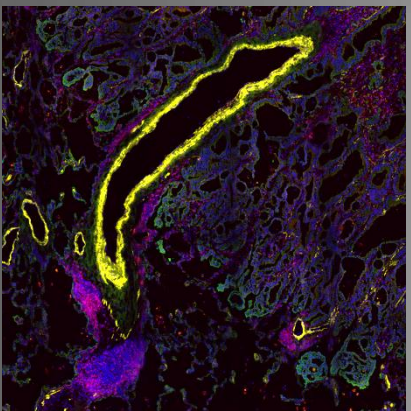
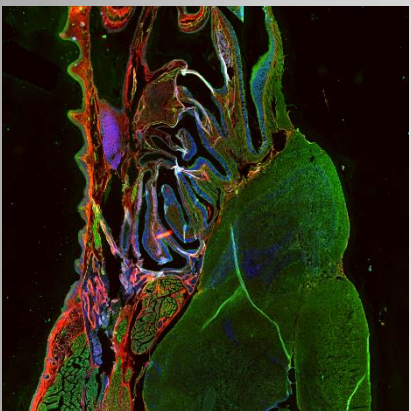
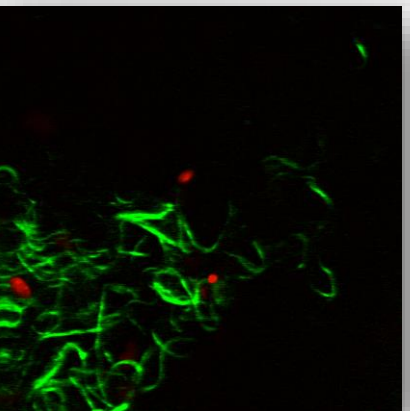


HISTOFLOW – Beyond virtual H&E

- Orthogonal data
- More than H&E
- Already digitalized



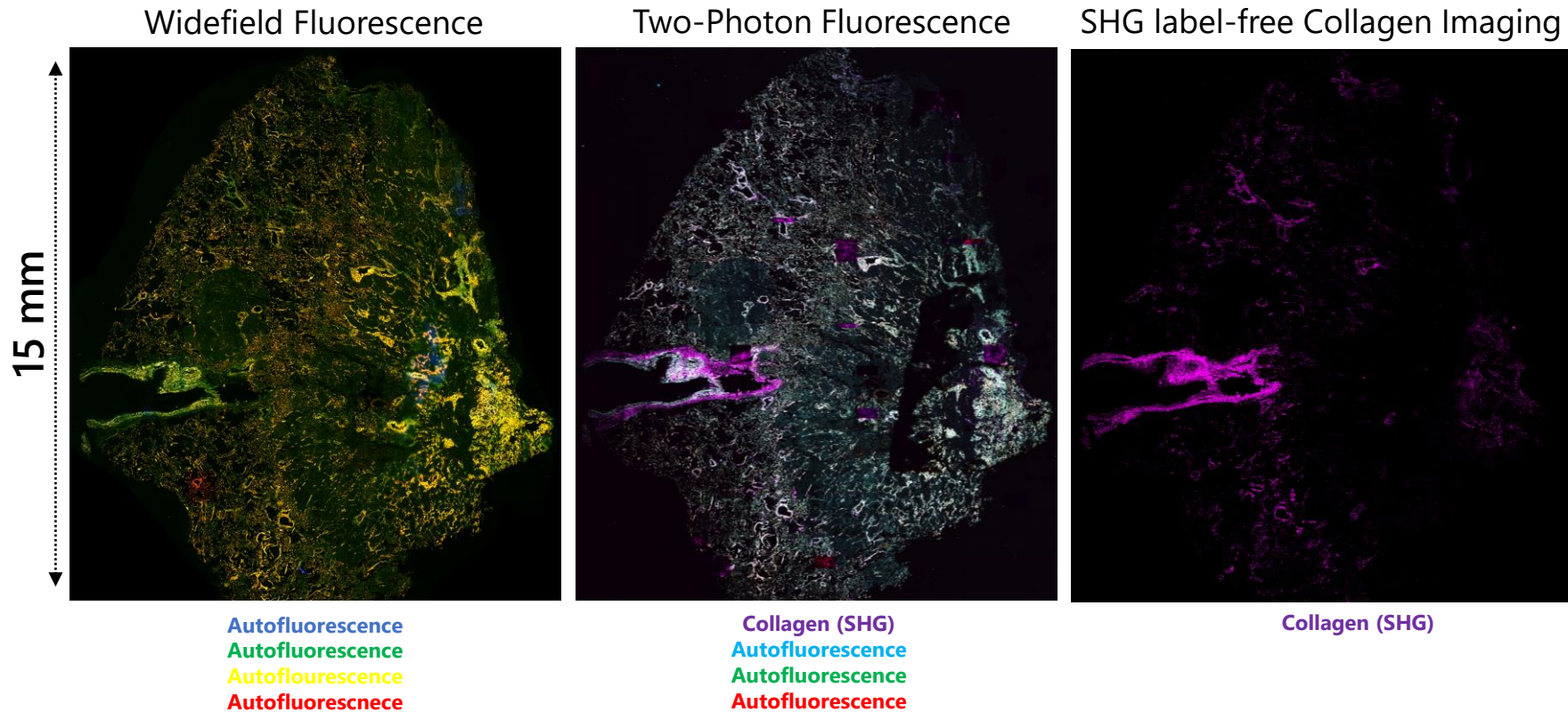
MULTIMODAL IMAGING

	FFPE-samples	Cryosections	3D Tissue
Label-free			
IHC/ICC			



MULTIMODAL IMAGING

Label-free Pathology



HISTOFLOW:

„Multiple imaging applications and modalities for label-free biomarkers“



HISTOFLOW – Label-Free Biomarkers



BIOMARKERS

BIOMARKER: „measurable indicator of some biological state or condition“ (Wikipedia)

Optical properties:	e.g. fluorescence, absorption
Mechanical properties:	e.g. stiffness
Morphological properties:	e.g. cell nucleus
Structural properties:	e.g. wall thickness

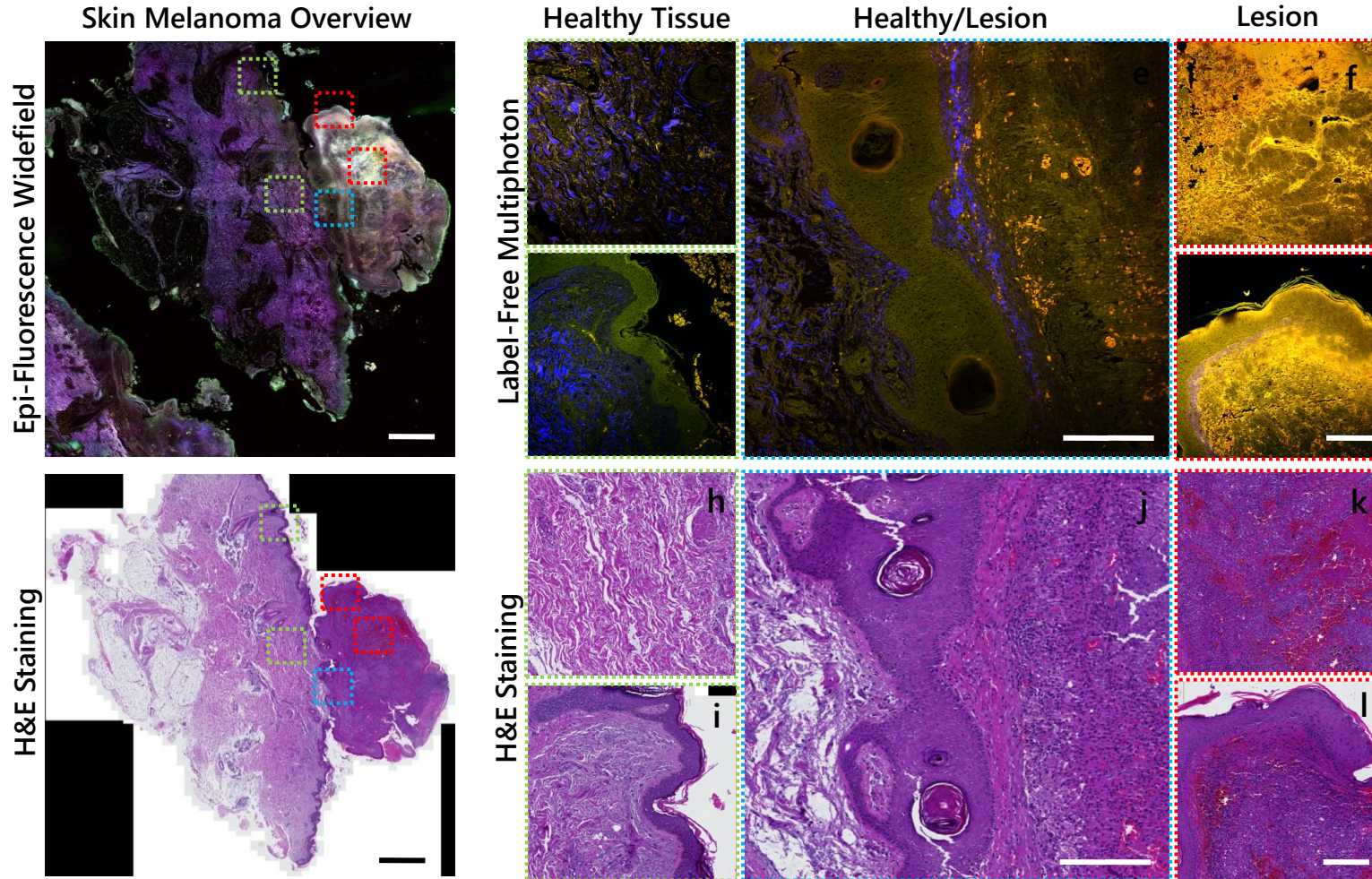
Biomarkers in medicine:

Predictive, diagnostic, prognostic indicator & “Contact-free, non-destructive”



WIDEFIELD GUIDED MULTIPHOTON MICROSCOPY

Label-free Pathology



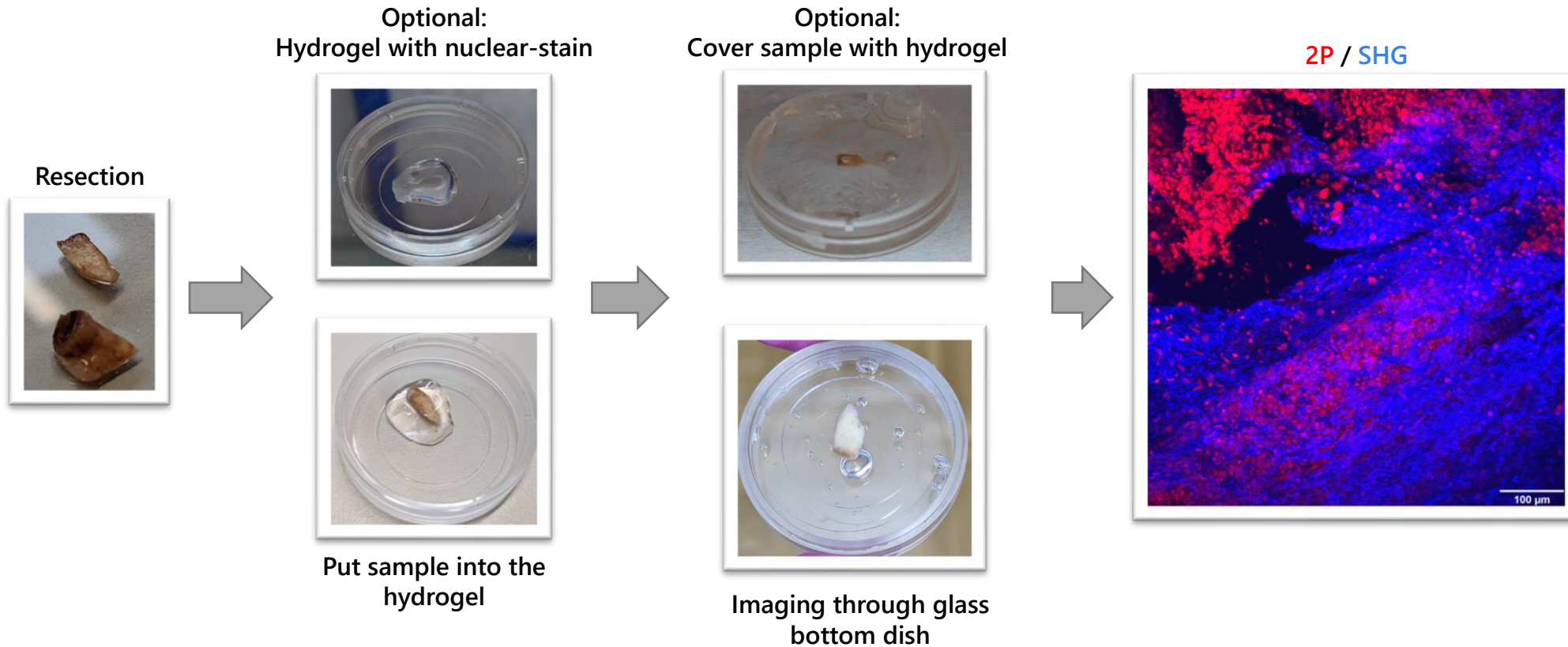
HISTOFLOW:

„Combine speed of widefield and label-free data from multiphoton microscopy“



WIDEFIELD GUIDED MULTIPHOTON MICROSCOPY

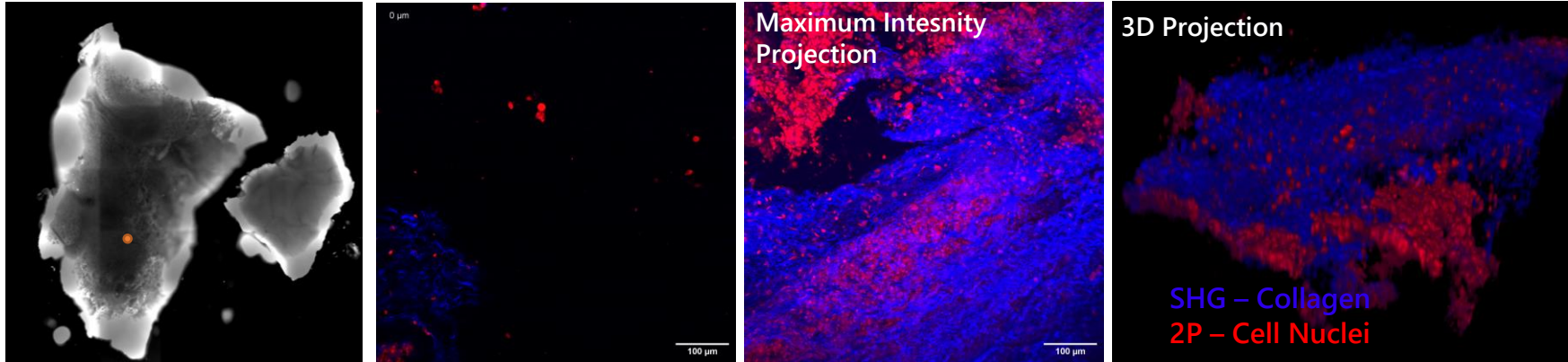
3D Label-free Pathology



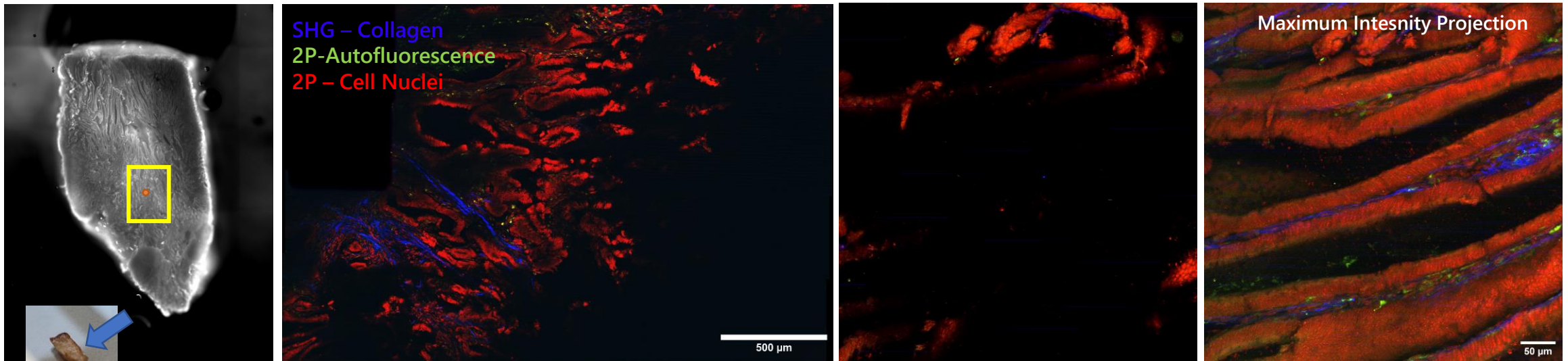
WIDEFIELD GUIDED MULTIPHOTON MICROSCOPY

3D Label-free Pathology

Swine Lung Resection



Human Colon Carcinoma Resection

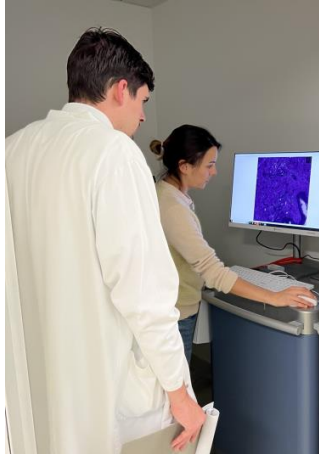


HISTOFLOW:

„Combine speed of widefield and penetration depth, optical sectioning and orthogonal data from multiphoton microscopy“

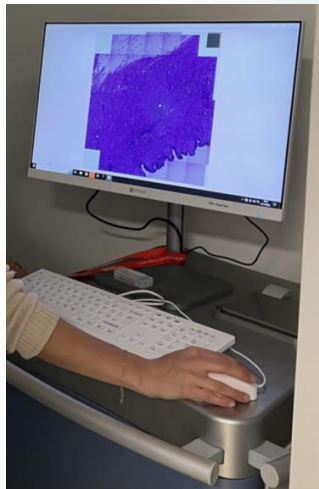


SUMMARY



HISTOFLOW

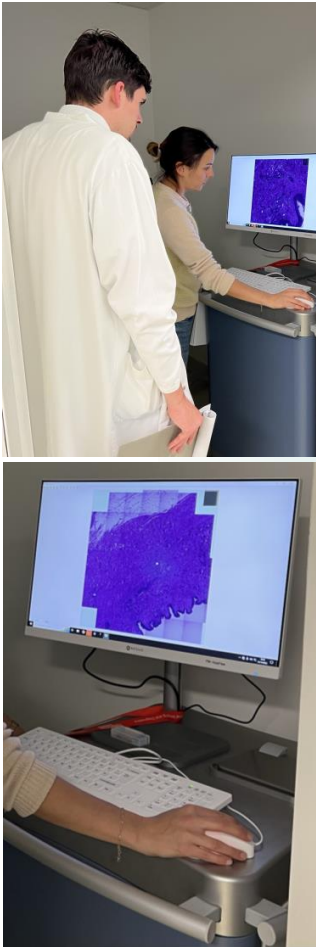
- AI-powered virtual H&E staining
- Fully equipped multimodal microscope
- Label-free imaging of biomarkers
- Imaging across scales in 3D



- Prototype
- AI needs a lot of input data and training hours
- Pathologists have to „learn“ to work with new and digital datasets



OUTLOOK



HISTOFLOW CARS for label-free Pathology

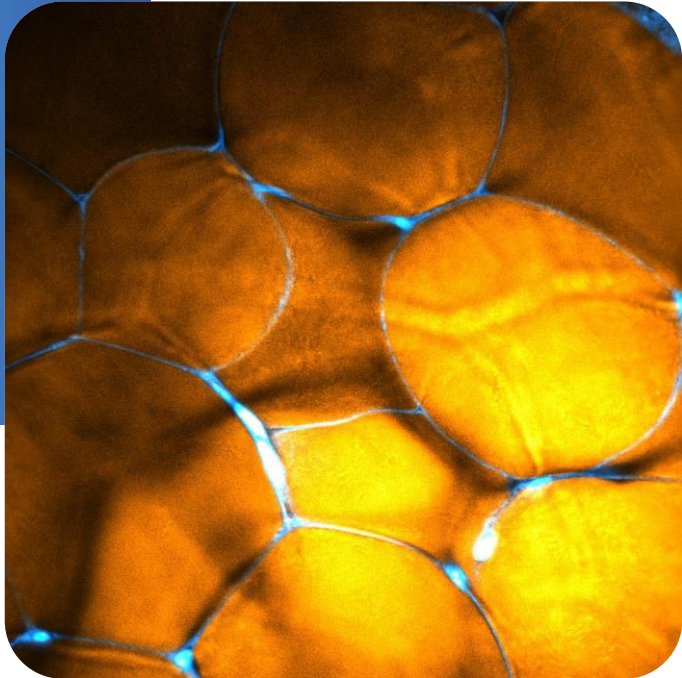
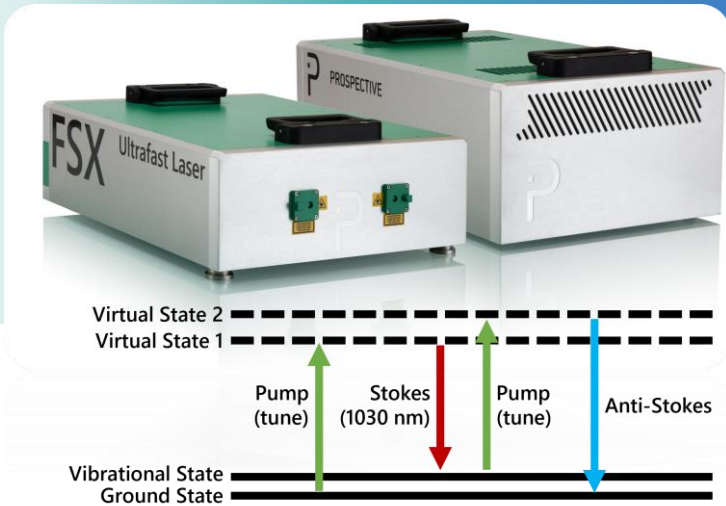


Image courtesy Prof. Thomas Hellerer and Thomas Kellerer, Multiphoton Imaging Lab, University of Applied Sciences Munich



CONTACT

Dr. Stefanie Kiderlen
CSO

PROSPECTIVE INSTRUMENTS
sk@p-inst.com
www.p-inst.com